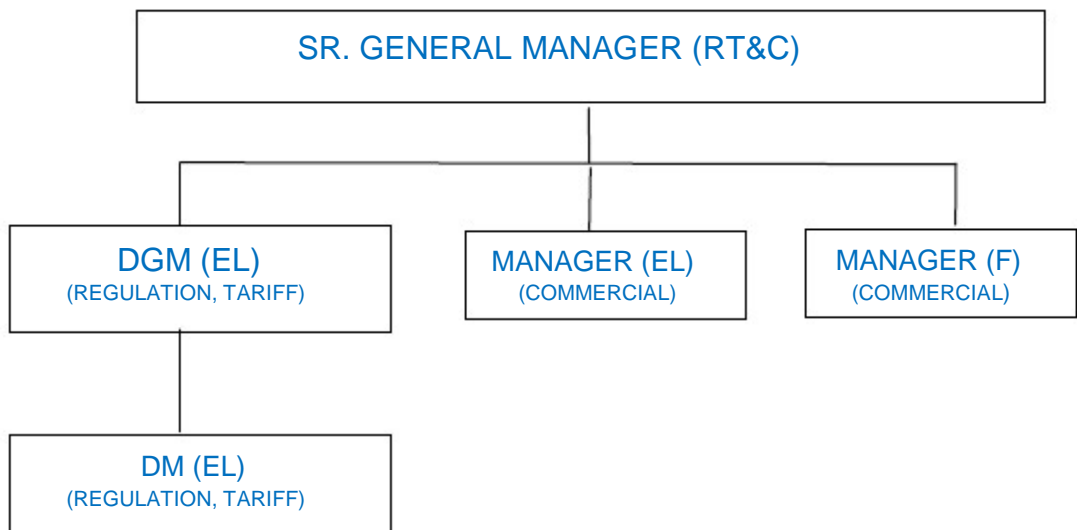


REGULATION, TARIFF & COMMERCIAL (RT&C) WING

STRUCTURE OF RT&C WING (AS ON 01.04.2013)

SHOWING POSITIONS HELD BY VARIOUS EXECUTIVES



IMPORTANT WORKS OF RT&C WING

(A) ACTS AS NODAL WING ON BEHALF OF OPTCL RELATING TO ALL REGULATORY & TARIFF MATTERS

RT&C wing complies with the requirement of OERC after collection of relevant data / information from concerned wings. These are briefly stated as under:

1. Collection of requisite information from concerned wing and filing of replies through affidavit in all cases before OERC / CERC / Appellate Tribunal for Electricity (ATE), New Delhi / High Court(s) and Supreme Court in which OPTCL is made a Respondent.
2. Initiation of proceedings in OERC through filing application / petition as per advice from concerned wings.
3. Filing of review petition in OERC / ATE against orders passed by them in which OPTCL prefers to file such petition.
4. Collection, compilation, consolidation and submission of data / information in OERC pertaining to periodic review of performance by OERC on various technical and financial parameters. The directions / observations of OERC made in review report are intimated to all concerned for reporting compliance to OERC through RT&C wing.
5. Collection of information in regard to agenda items and apprising CMD for deliberation in the meeting of State Advisory Committee (SAC).
6. Passing on information to concerned wing regarding compliance with the requirement of licence conditions approved by OERC (effective from 1st November 2006).
7. As per requirement of OERC on various other issues, data / information are collected from concerned wings for submission to OERC within the time stipulated by OERC.

(B) FORMULATES AND FILES ANNUAL REVENUE REQUIREMENT (ARR) AND TRANSMISSION TARIFF (TT) APPLICATION BEFORE OERC

The activities followed in respect of formulation, filing of ARR & TT application and compliance of directions of OERC with regard to the said application are briefed as under:

1. Data / information from the concerned wings are collected in prescribed formats. These are compiled and consolidated for preparation of ARR & TT application document in line with the

- guidelines made for the purpose.
2. ARR & TT application document for ensuing year is filed in OERC every year within the stipulated date i.e.30th November of current year.
 3. As per direction of OERC, the publication of the ARR application document in abridged form is made in newspapers as well as in website of OPTCL for wide circulation in which views / objections / suggestions are sought from all interested persons. They are informed to obtain the application document from corporate office as well as field offices of OPTCL on payment of specified amount. Queries of the OERC on the said application are met in consultation with concerned wings.
 4. Persons (Respondents) preferring to furnish views / objections / suggestions on the application, submit the same to OPTCL. Those
 5. are examined by RT&C wing and suitable replies to the objections are filed in OERC serving a copy to the Respondent. OERC notifies the date of hearing of the OPTCL's application. Interested Objectors and OPTCL take part in the hearing to put forth their views before OERC.
 6. OERC passes order approving ARR & TT of OPTCL which is published through newspapers and website of OPTCL. Impact of aforesaid OERC order on OPTCL i.e.
 7. Revenue/Expenditure projected vis-à-vis Revenue/Expenditure approved by OERC is examined & evaluated. If the order appears to be not in favour of OPTCL, RT&C wing works in detail
 8. regarding prospects of going for filing a review petition in OERC or moving ATE.

(C) PREPARES AND RAISES MONTHLY BILLS TOWARDS TRANSMISSION / WHEELING CHARGES AND TAKES UP ALL ISSUES RELATING TO BILLS INCLUDING CASES ARISING OUT OF INTRA-STATE & INTER-STATE BILLING

RT&C wing prepares following bills on monthly basis:

1. Intra-state transmission charge bills are raised towards transmission of energy for four DISCOMs (CESU, NESCO, SOUTHCO and WESCO) who are long-term open access customers.
2. Bills on other long-term open access customers (NALCO and IMFA) are raised for wheeling of energy from their CGPs to their industries located at Damanjodi and Therubali respectively. Inter-state wheeling charge bills are raised upon GUVNL,
3. CSPDCL, MPPMCL, MSEDCL, DD and DNH for wheeling of Central Sector Power from Eastern Region to their territories through OPTCL network. Inter-state wheeling charge bills are raised upon CSPDCL for wheeling of power from Hirakud power station (5 MW share of
4. Chhattisgarh).

Customers of OPTCL:

(I) Long-Term Open Access Customers

Intra-State	Inter-State
CESU	MPPMCL
WESCO	CSPDCL
NESCO	MSEDCL
SOUTHCO	GUVNL
NALCO	DNH
IMFA	DD

(II) Short-Term Open Access Customers during 2013-14 (till October 2013)

INTRA-STATE OPEN ACCESS

Sl. No.	Injecting Utility	Drawee Utility
1	Jindal Steel & Power Ltd., Angul	Jindal Steel & Power Ltd., Barbil
2	HIDALCO, Hirakud	HINDALCO, FRP, Hirakud
3	OCL, Rajgangpur	OCL, Tangi
4	VAL, Jharsuguda	VAL, Lanjigarh
5	Tata Sponge Iron Ltd., Joda	Tata Steel Ltd., Joda & Bolani
6	GRIDCO	Bhusan Steel Ltd., Dhenkanal

INTER-STATE OPEN ACCESS (BILATERAL / COLLECTIVE)

Sl. No.	Utility	Sl. No.	Utility
1	Aarti Steels Ltd.	11	OCL India Ltd.
2	Aryan Ispat & Power Ltd.	12	SMC Power Generation Ltd.
3	Bhusan Steel Ltd.	13	Tata Sponge Iron Ltd.
4	Bhusan Power & Steel Ltd.	14	Vedanta Aluminium Ltd.
5	FACOR Power Ltd.	15	VISA Steel Ltd.
6	GMR Kamalangi Energy Ltd	16	GRIDCO Ltd.
7	HINDALCO Power Ltd.	17	Adhunik Metaliks Ltd.
8	Jindal Stainless Ltd.	18	Concast Steel & Power Ltd.
9	Jindal Steel & Power Ltd.	19	Essar Steel India Ltd.
10	Nava Bharat Ventures Ltd.	20	Rohit Ferro-Tech Ltd.