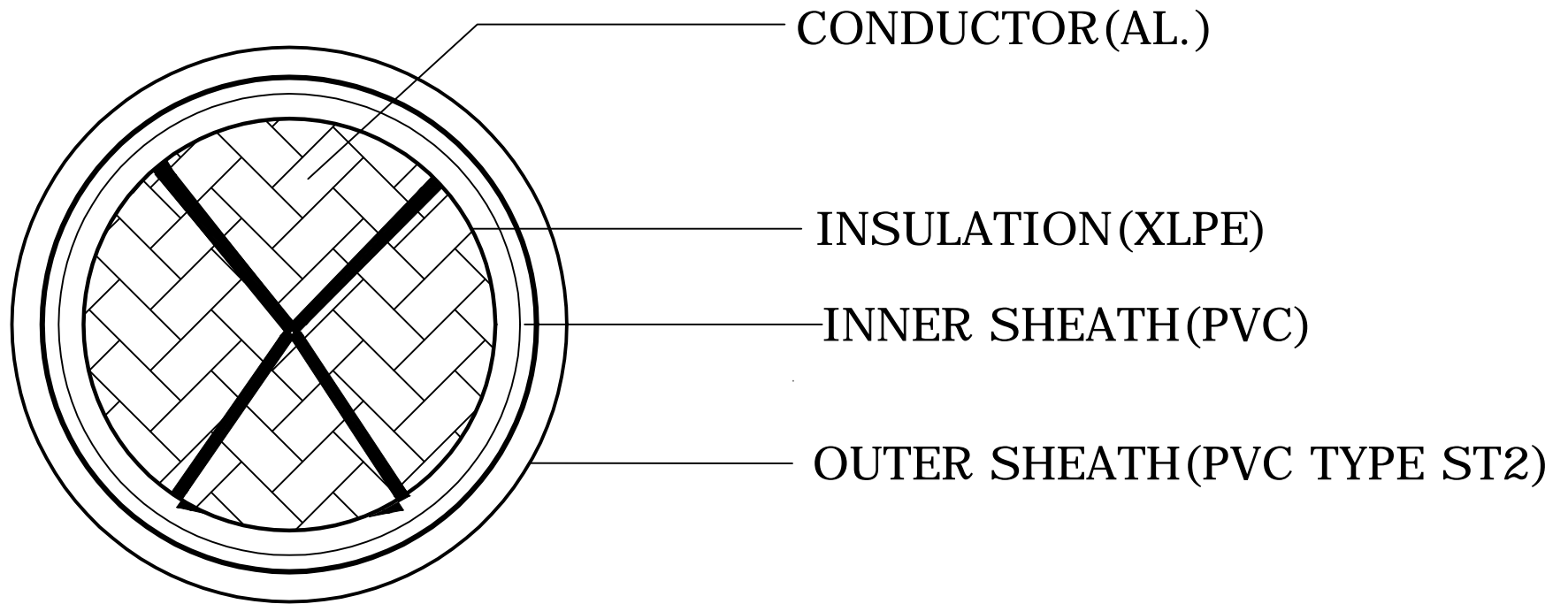


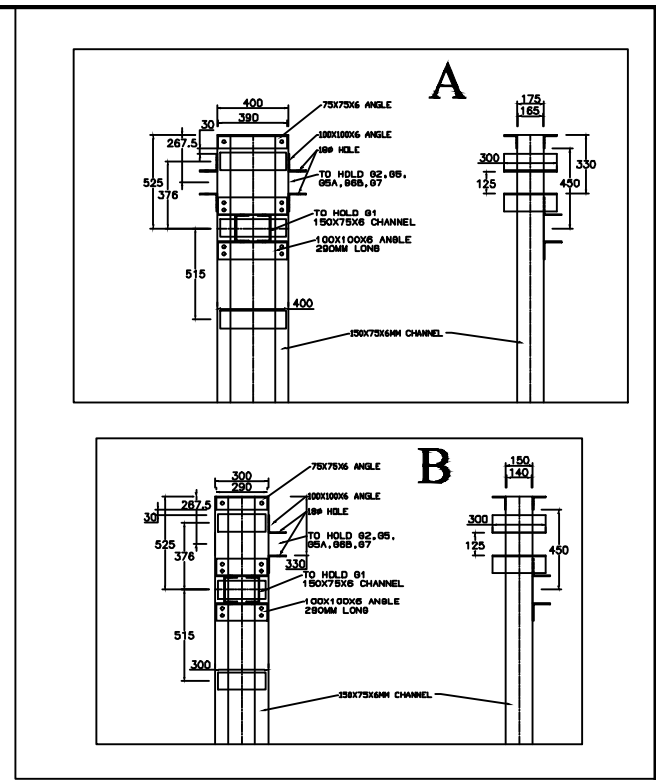
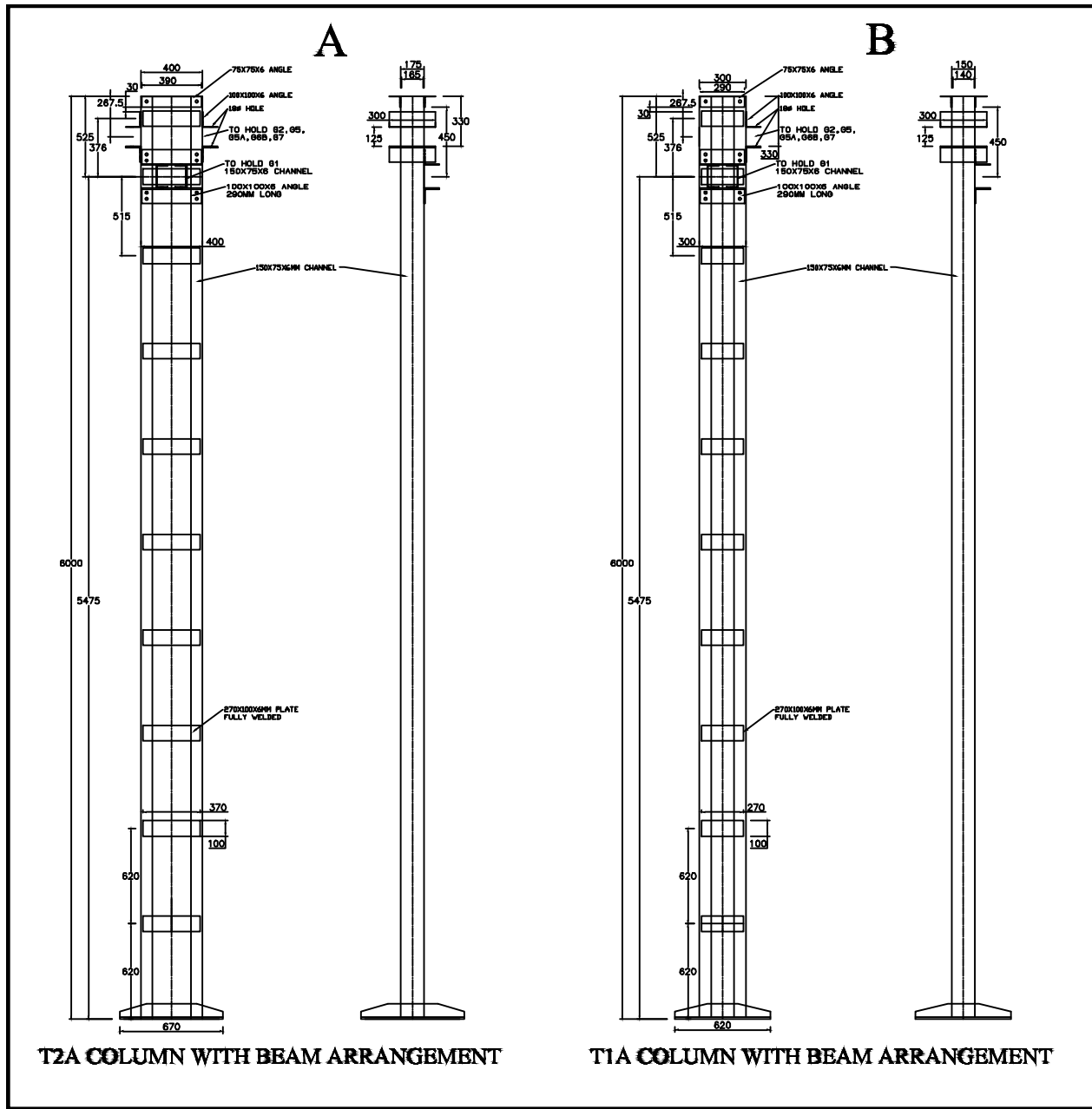
CABLE TRENCH WIDTH 500MM

DRG NO- ODSSP / SS / 26



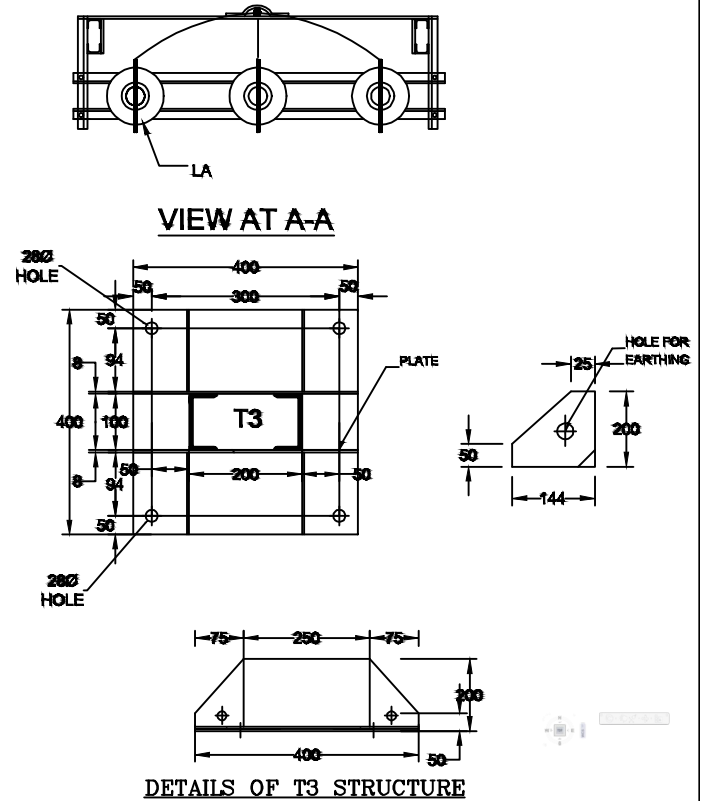
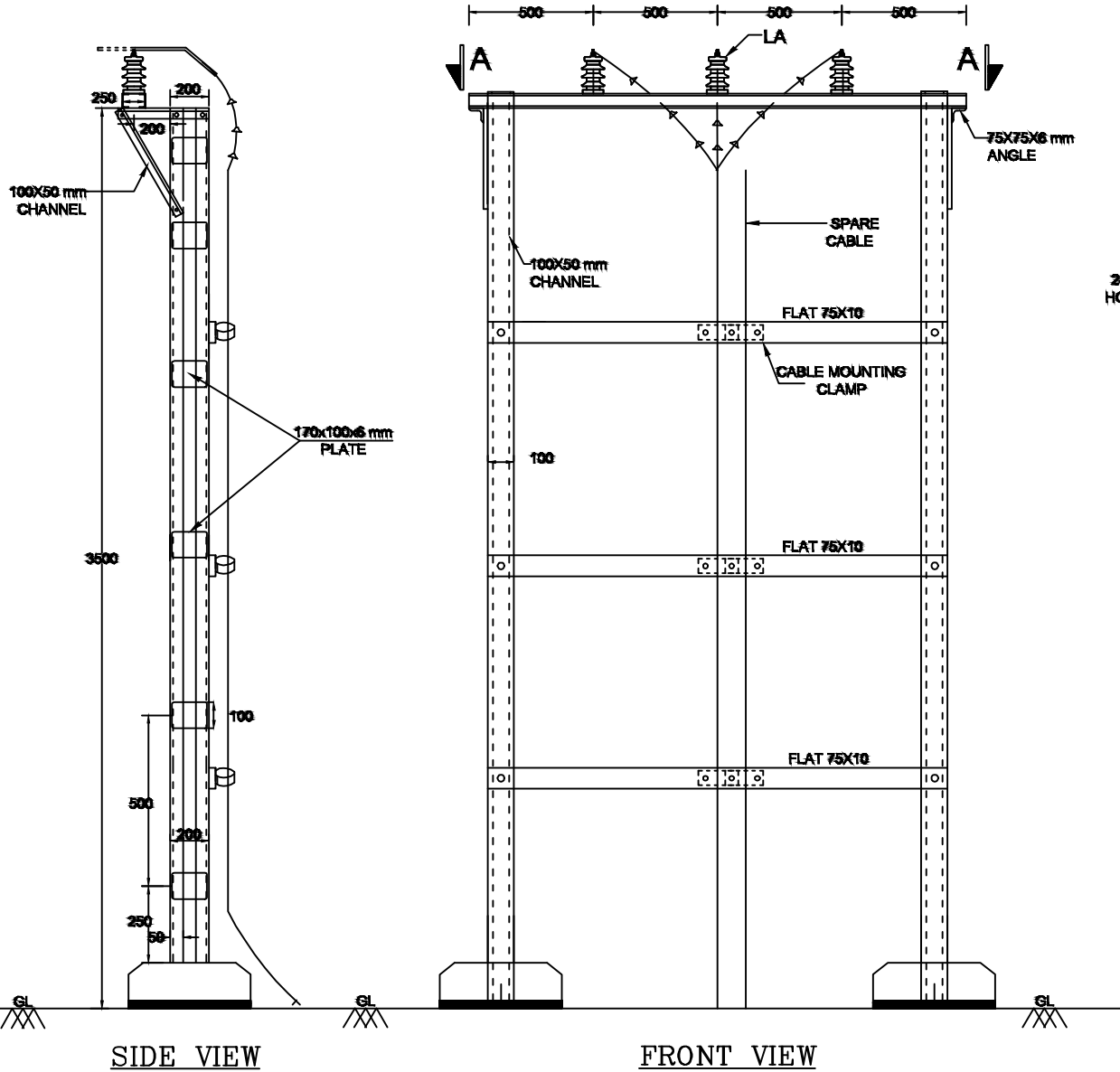
CROSS-SECTIONAL VIEW OF  
1.1kV 3 1/2 C, UN-ARMoured CABLE

Drg No. -ODSSP/SS/27/REV-A



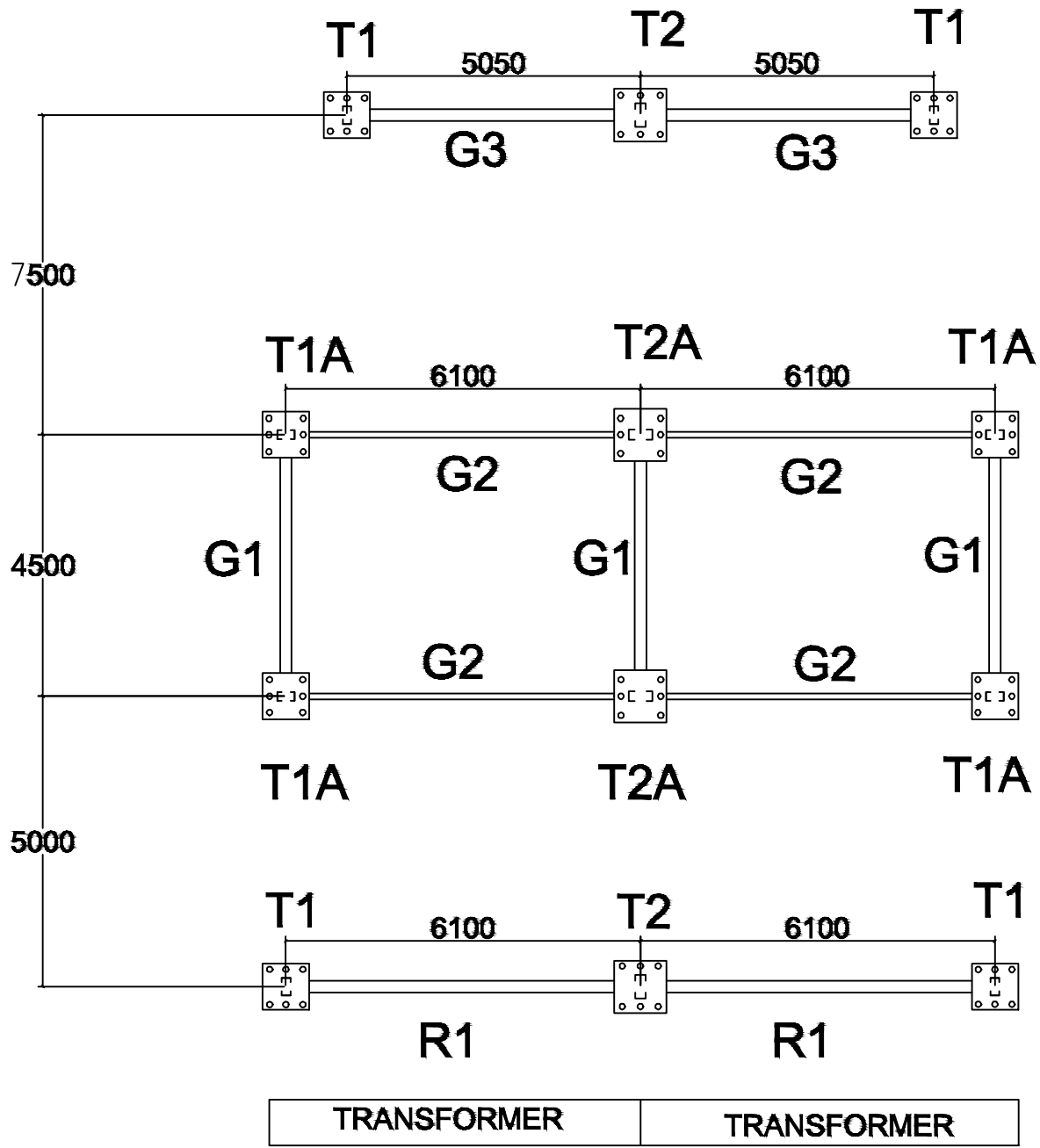
DRG NO-ODSSP/28

# DETAILS OF T3 STRUCTURE



DRG NO-ODSSP/SS/29

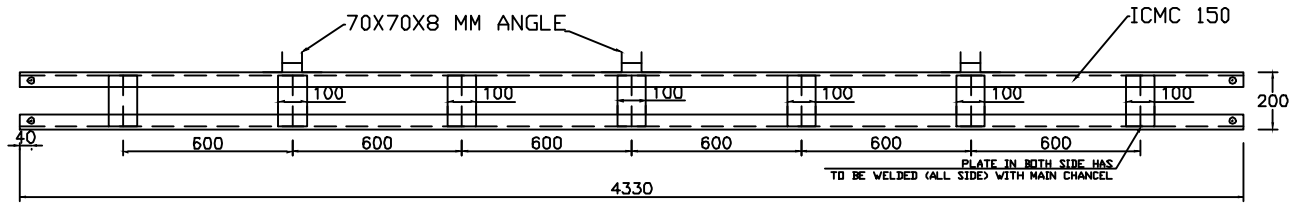
# FOUNDATION BOLT ARRANGEMENT FOR OUTDOOR S/S



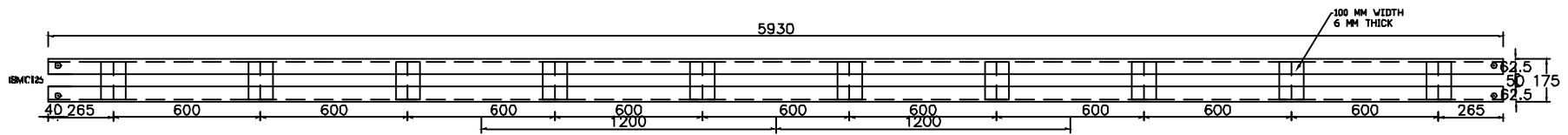
TRANSFORMER      TRANSFORMER

ALL THE BOLT HOLES 34mm.

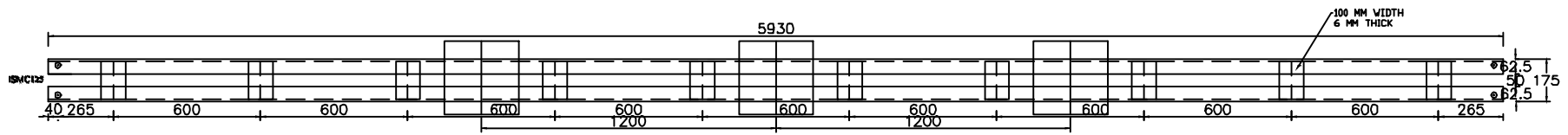
DRG NO- ODSSP/SS/30



G1



G2.

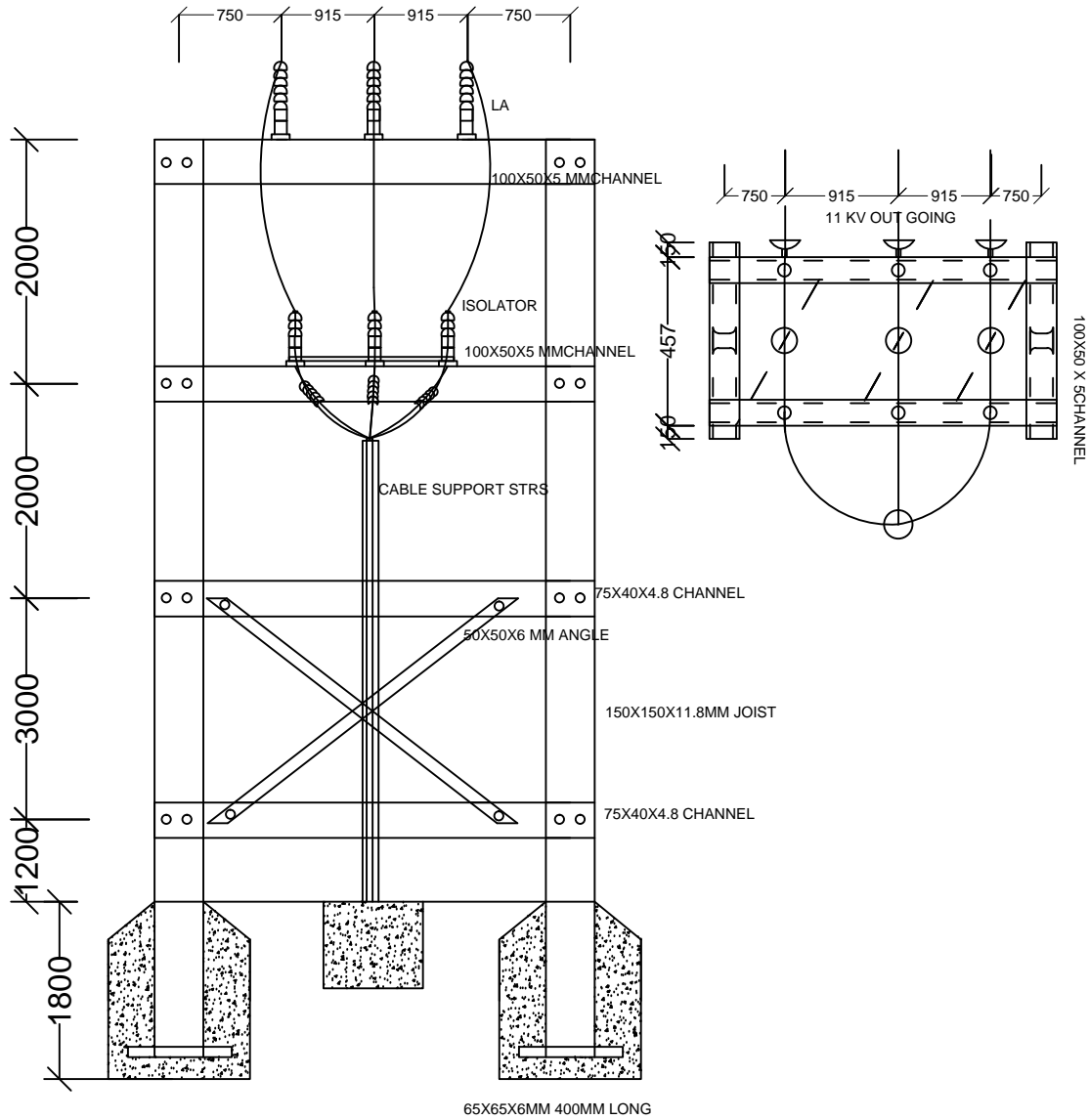


R1

# G1, G2 & R1 For 33 kV Incomer in Substation

DRG NO-ODSSP/SS/31

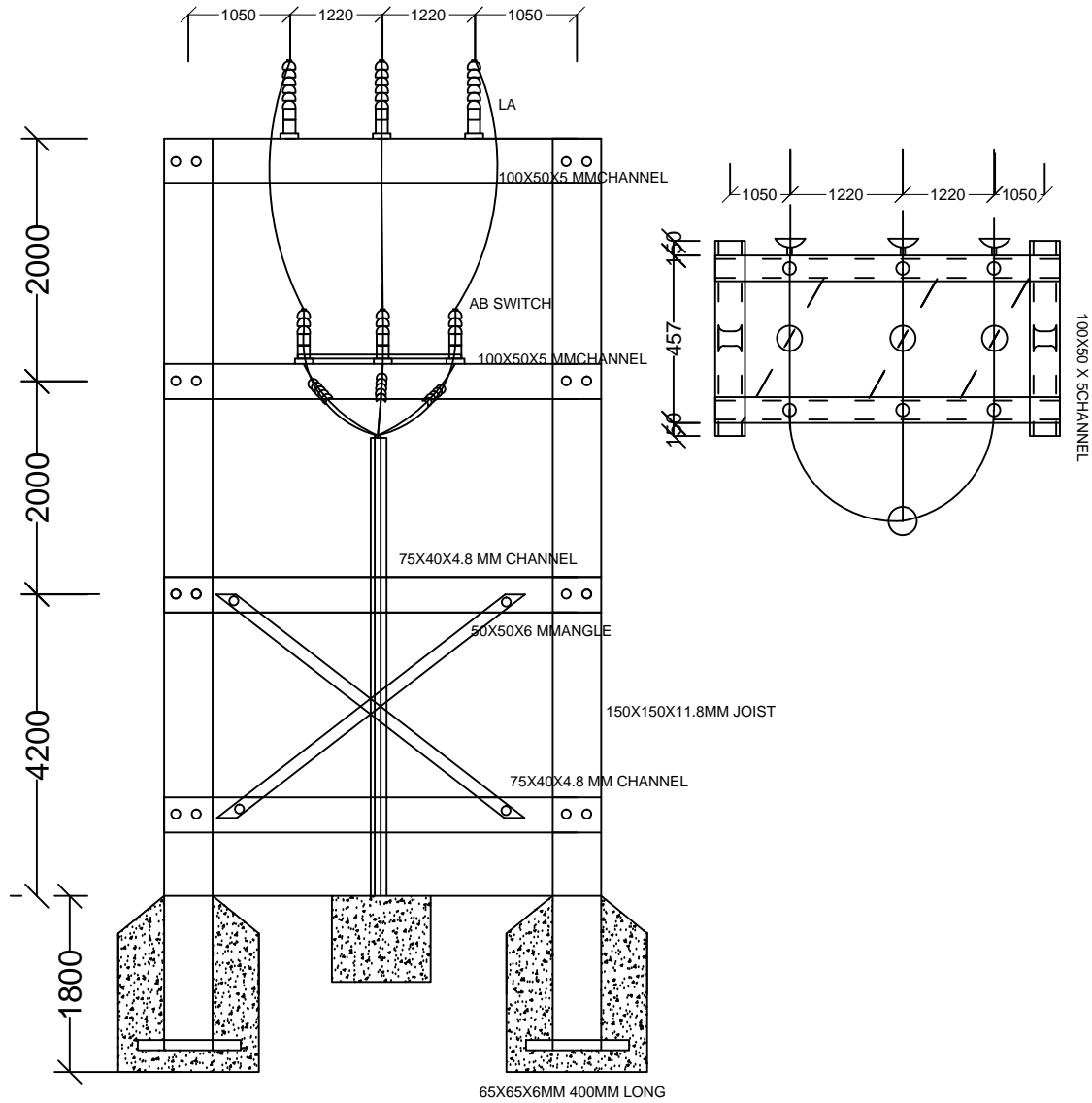
PLAN & SECTION FOR DP STRUCTURE FOR  
11KV GANTRY AT S/S



DRG NO-ODSSP/SS/32

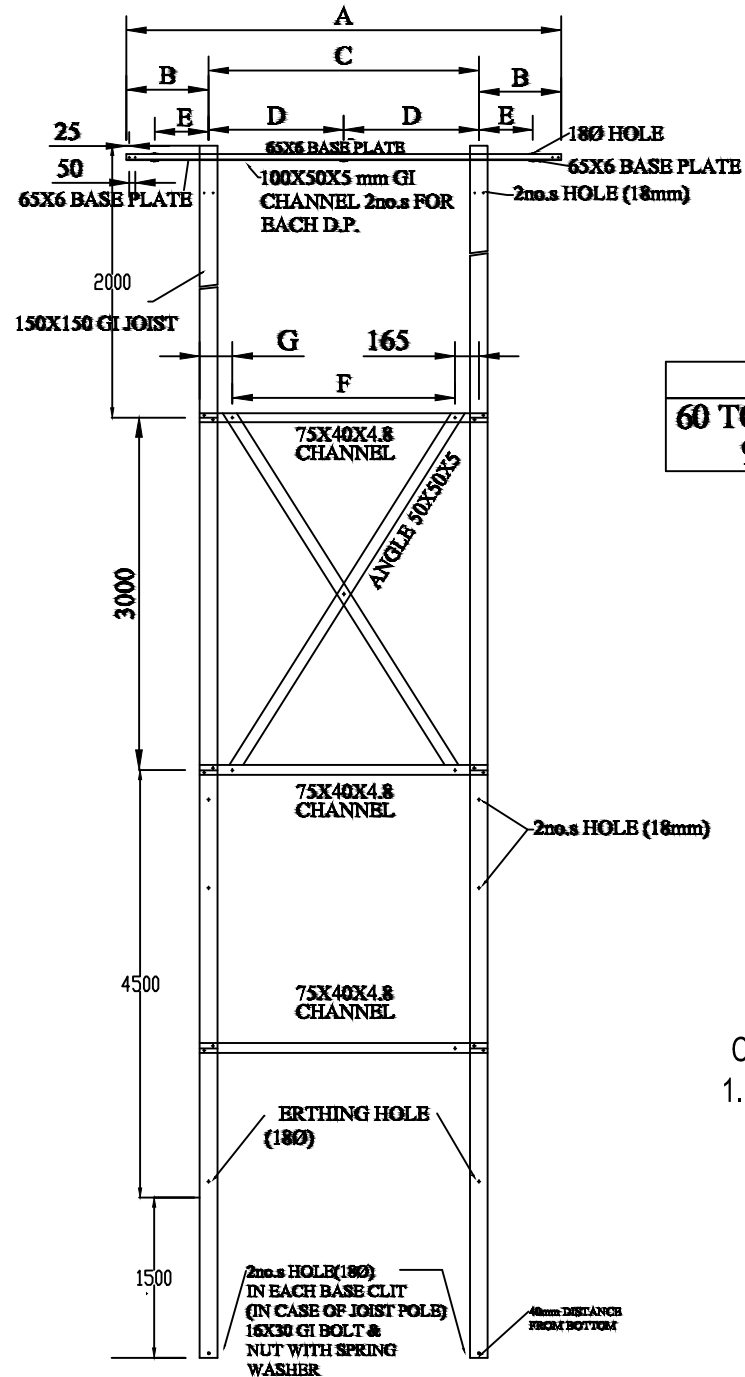


PLAN & SECTION FOR DP STRUCTURE FOR  
33 /0.4 kV STATION TRANSFORMER



DRG NO-ODSSP/SS/33

# DP STRUCTURE FOR 33 /11 kv(JOIST)



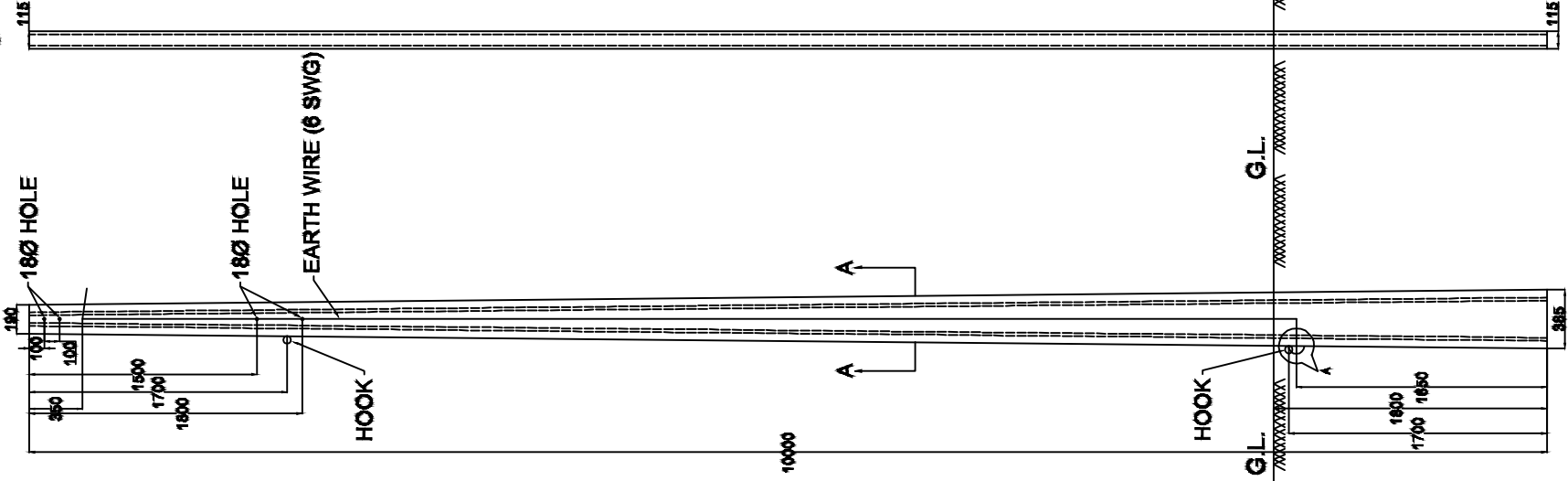
	A	B	C	D	E	F	G
60 TO 90	4200	850	2500	1250	600	1970	240

CHANGES:

1. DP STRUCTURE'S ONLY FOR ANGLE DEVIATION 60-90

DRG NO. - ODSSP / LINE / 1-REV-B

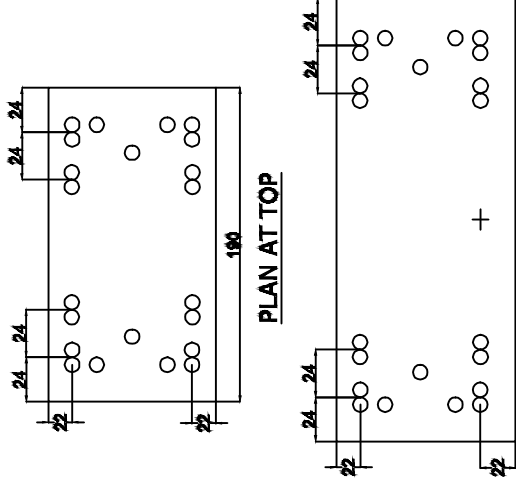
# 10Mtrs /300 Kgs PSC POLE



ELEVATION

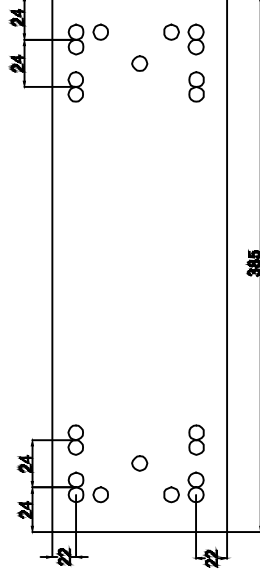
SIDE VIEW

DRG NO. - ODSSP / LINE / 3



PLAN AT TOP

PLAN AT A-A



PLAN AT BOTTOM

Note:- FACTOR OF SAFETY 2.5

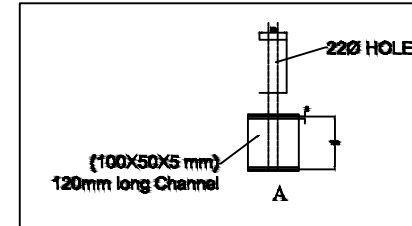
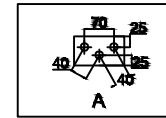
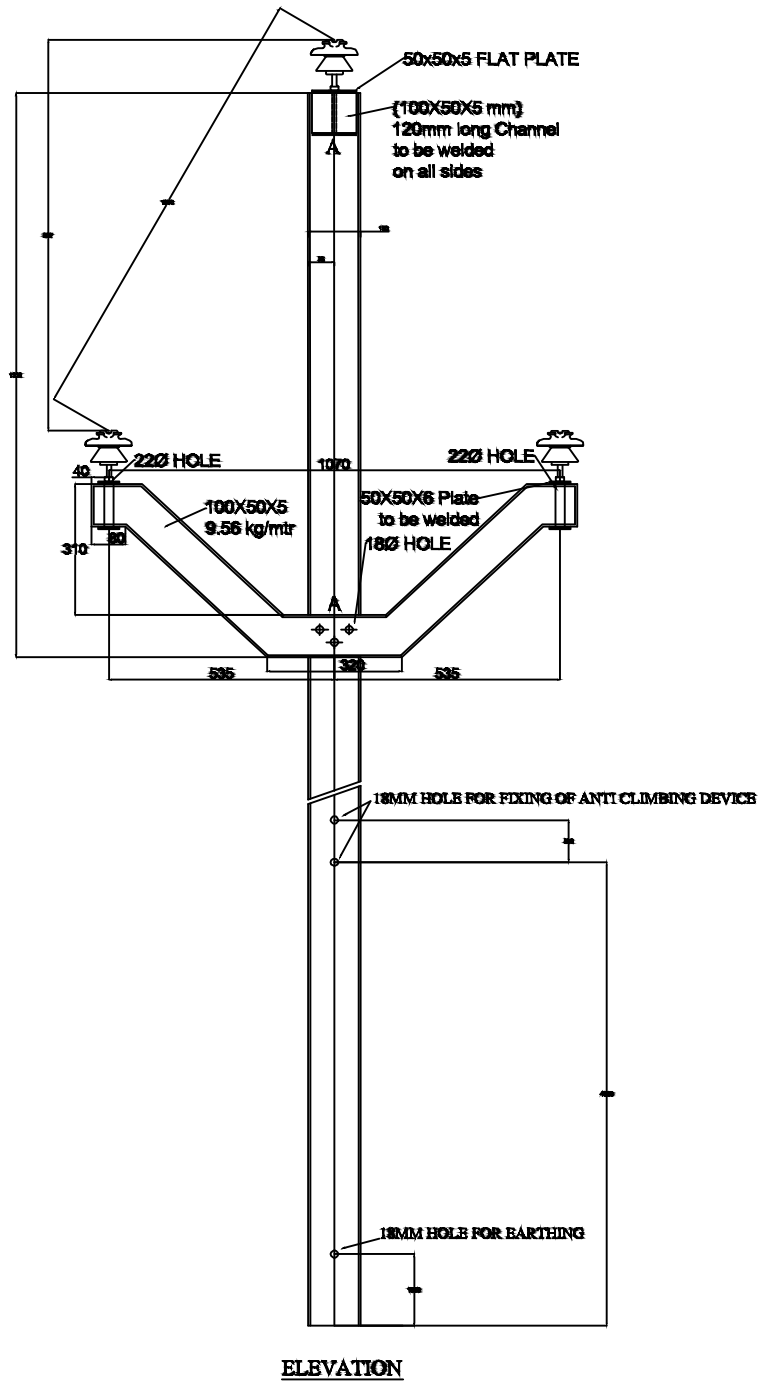
SL.NO.	DESCRIPTION	QUANTITY
1.	NO. OF TENSINED WIRES (4MM)	22 NOS.
2.	CONCRETE GRADE	M-420
3.	DIA OF PRESTRESSING WIRE	4MM
4.	WORKING LOAD	330 KGS
5.	ULTIMATE TENSILE STRENGTH OF PRESTRESSING WIRE	17500 KG/CM <sup>2</sup>
6.	PLANTING DEPTH	1800MM
7.	CLEAR COVER	22 MM
8.	G.I. EARTH WIRE 6 SWG	1 NO.

LEGEND:-

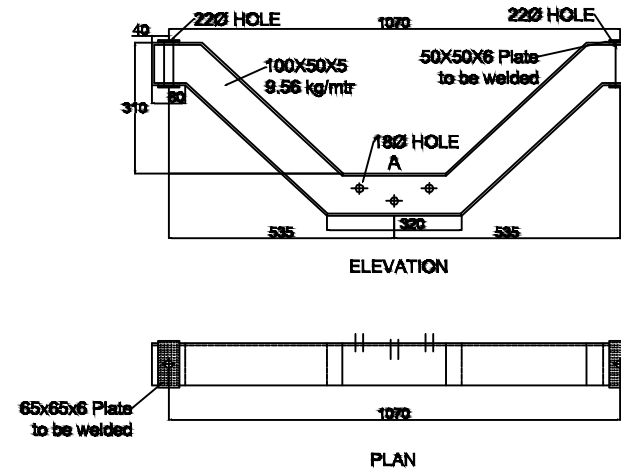
- - DENOTES TENSIONED WIRE
- +- DENOTES POSSIBLE OF EARTH WIRE

- ALL DIMENSION ARE NOT IN SCALE

# 11Kv V-CROSS ARM FOR RS JOIST

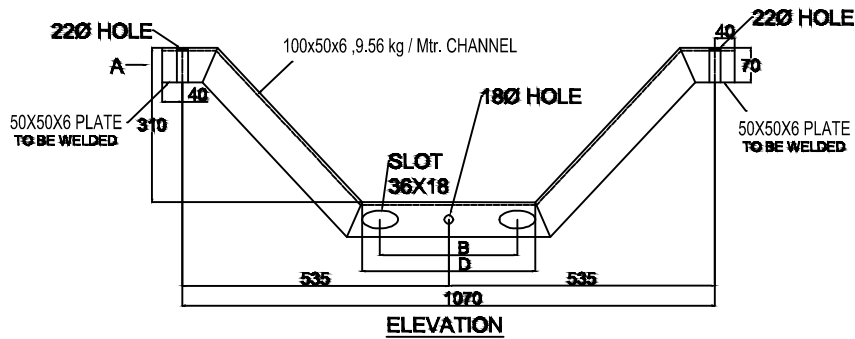


# 11Kv V-CROSS ARM FOR RS JOIST

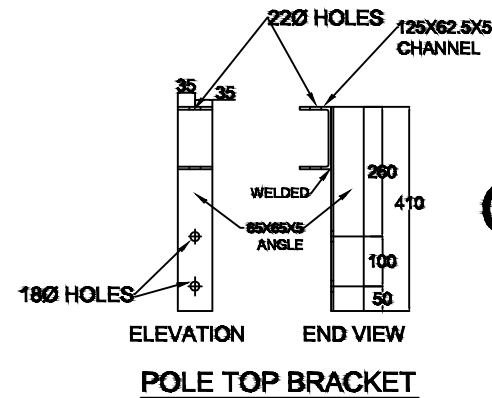
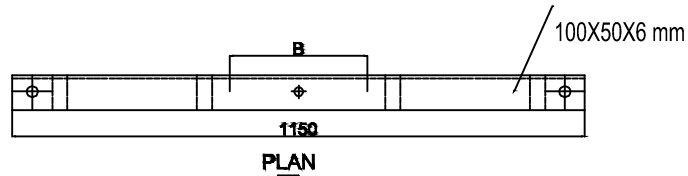


# 11 KV V-CROSS ARMS WITH TOP BRACKET & BACK CLAMP FOR PSC POLE

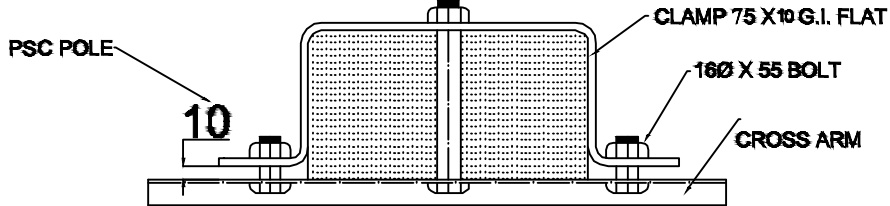
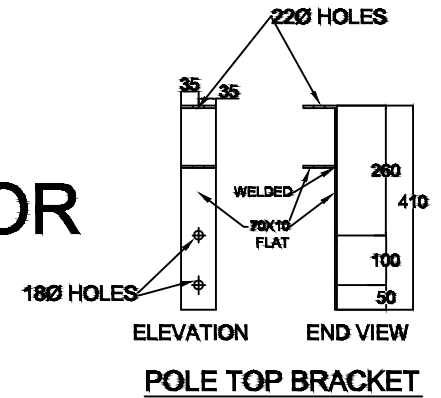
100x50x5 , 9.56 kg / Mtr. CHANNEL



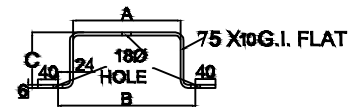
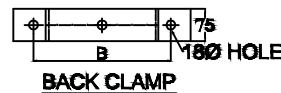
LENGTH OF POLE (L)	LOAD(KG)	A	B	C	D	BOTTOM LINE OF X-ARM FROM TOP OF THE POLE IN mm
10000 mm minimum	300	216	276	111	362	1170



OR



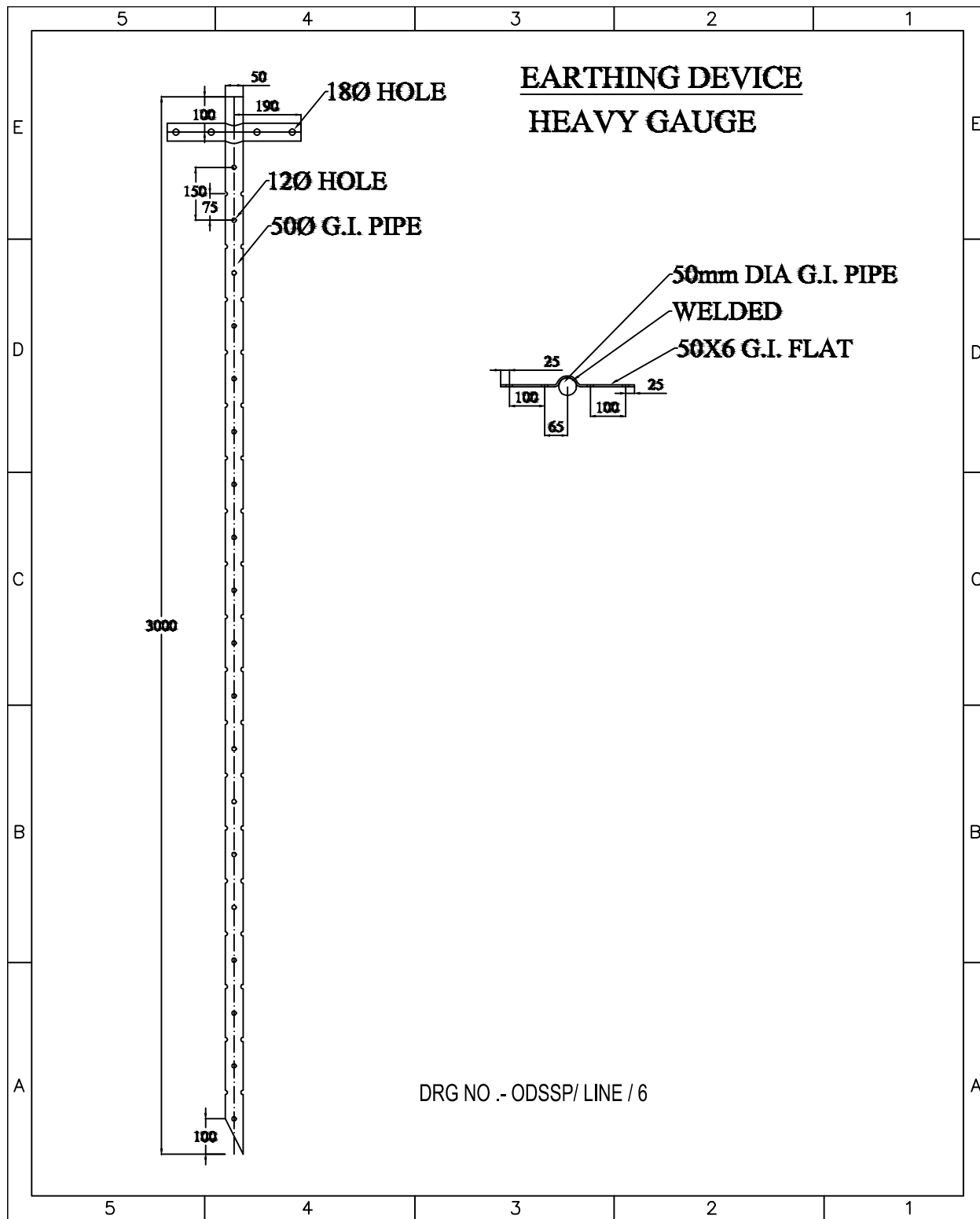
BACK CLAMPS & CROSS ARM ASSEMBLY



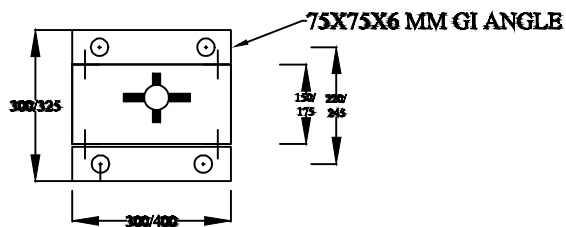
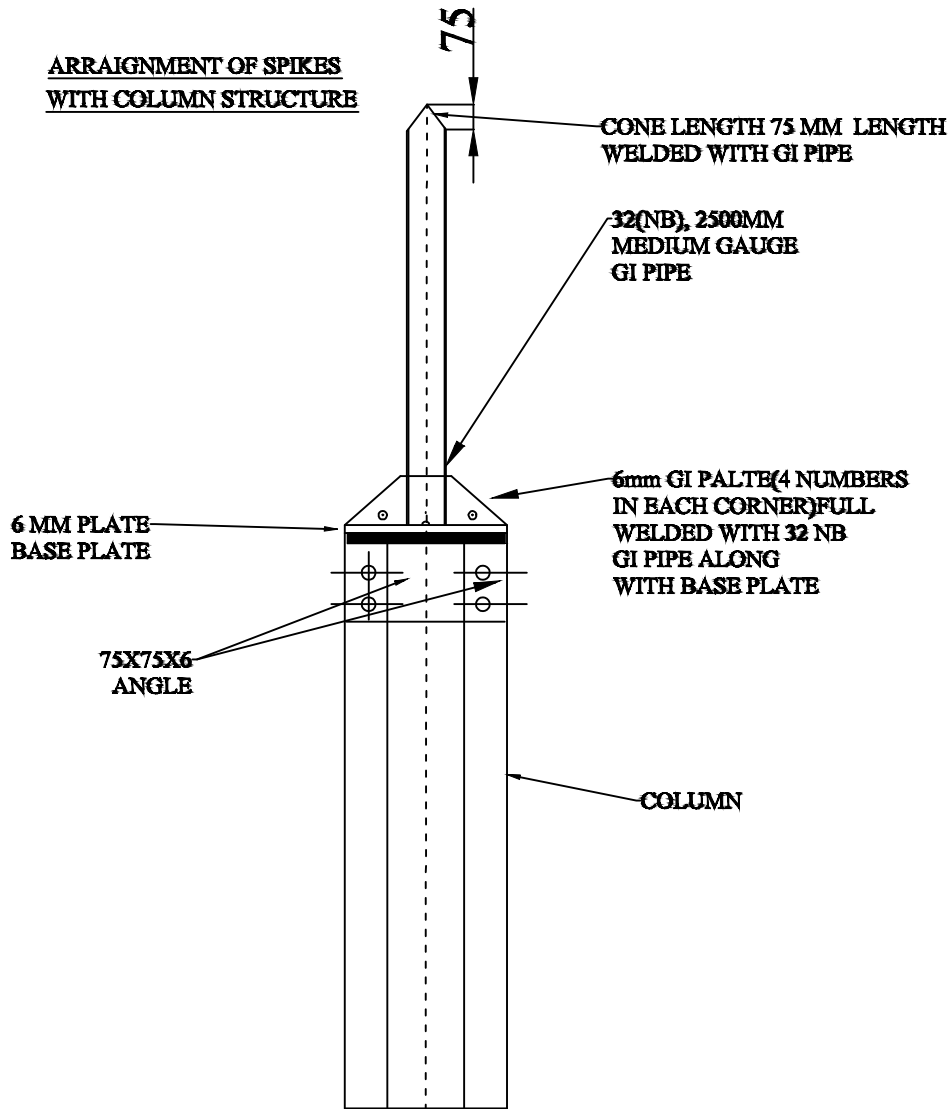
MAJOR CHANGES:-

1. ANGLE 70X70X6 IS REPLACED BY 100X50X6

DRG NO .- ODASSP / LINE / 5-REV-A

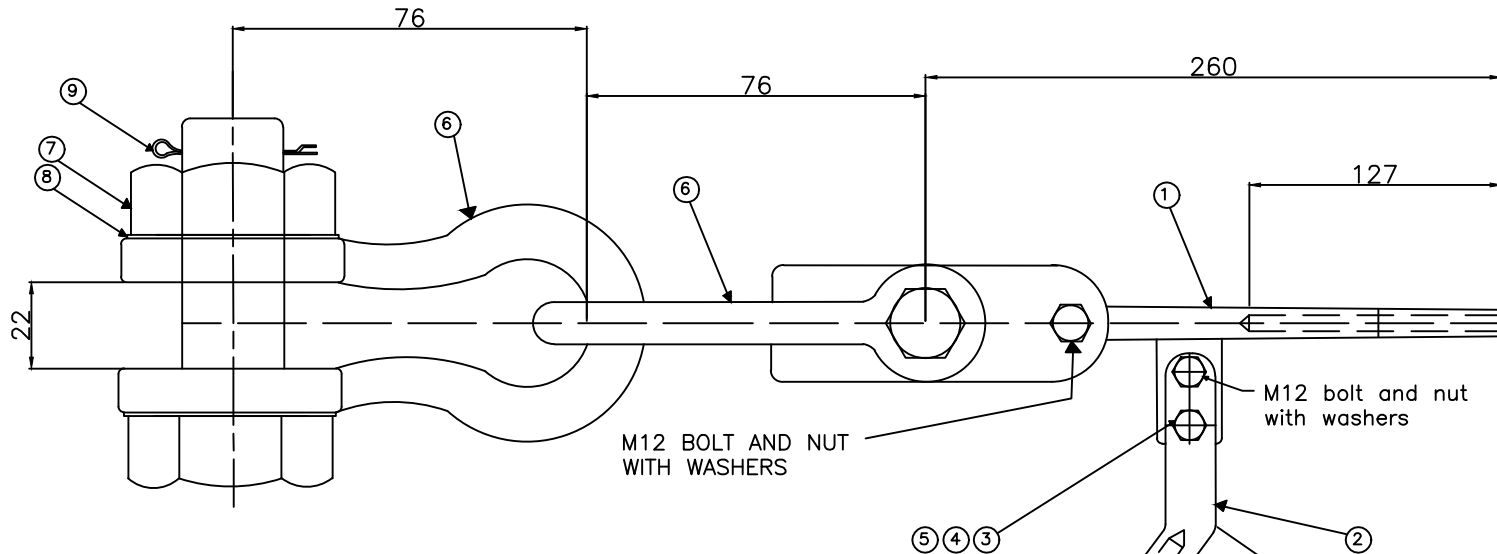


**ARRAIGNMENT OF SPIKES  
WITH COLUMN STRUCTURE**



**TOP PLAN OF  
STRUCTURE**

## TENSION ASSEMBLY FOR EARTHWIRE



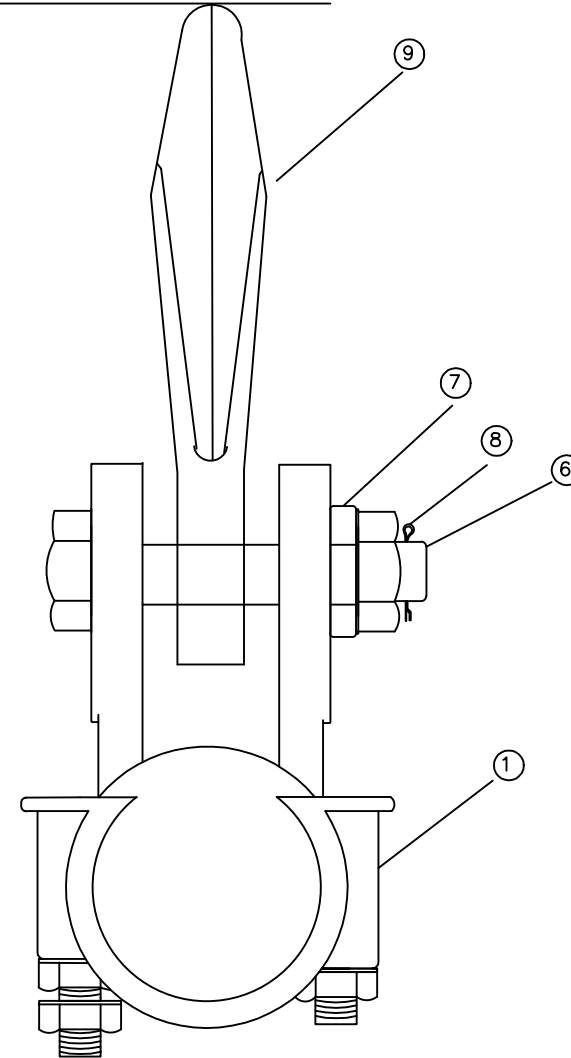
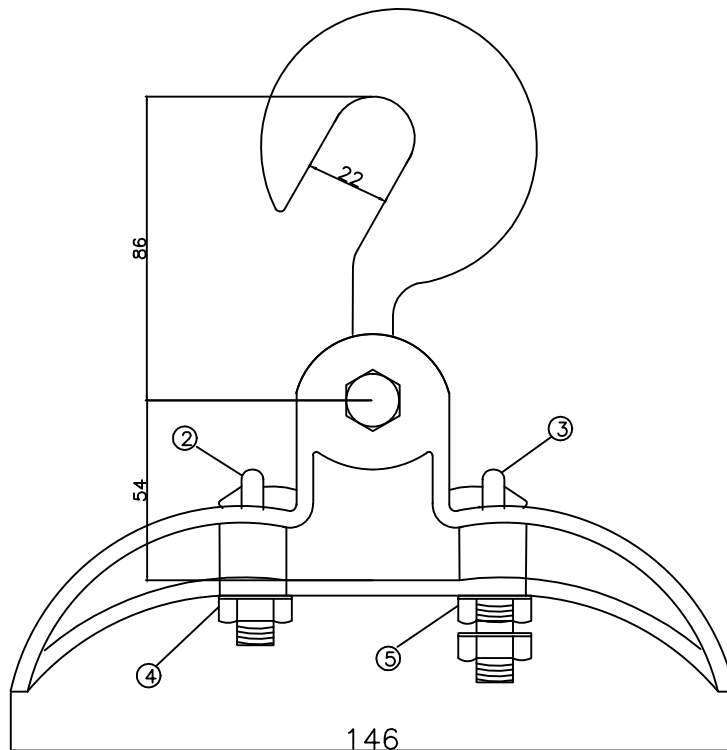
SL.	DESCRIPTION	MATERIAL	CAT NO.	QTY.
1.	CLAMP	FOGED STEEL GALVANISED		1
2.	JUMPER	FORGED STEEL GALVANISED	MGSS 10	1
3.	BOLTS WITH NUTS,M12	GALVANISED STEEL		3
4.	FLAT WASHER M12	GALVANISED STEEL		3
5.	SPRING WASHER,M12	SPRING STEEL ELECTRO GALV		3
6.	ANCHOR SHACKLE	FORGED STEEL GALVANISED		2
7.	BOLTS WITH NUTS,M16	GALVANISED STEEL	MGSS 10	2
8.	FLAT WASHER,M16	GALVANISED STEEL		2
9.	SPLIT PIN	STAINLESS STEEL/BRASS		2

NOTES:-  
 GENERAL TOLERANCE  $\pm 2\%$  UNLESS OTHERWISE SPECIFIED. APPLICABLE STANDARD IS: 2486 PART-I  
 FERROUS PART IS HOT DIP GALVANISED AS PER IS: 2629 SLIP STRENGTH 95 OF UTS OF EARTH WIRE MINIMUM BREAKING STRENGTH 7000 KG SPRING WASHER ARE ELECTRO GALVANISED  
 FLAT WASHER ARE HOT DIP GALVANISED SUITABLE FOR EARTHWIRE 7/3.15 MM.

Drg No-ODSSP/LINE/8



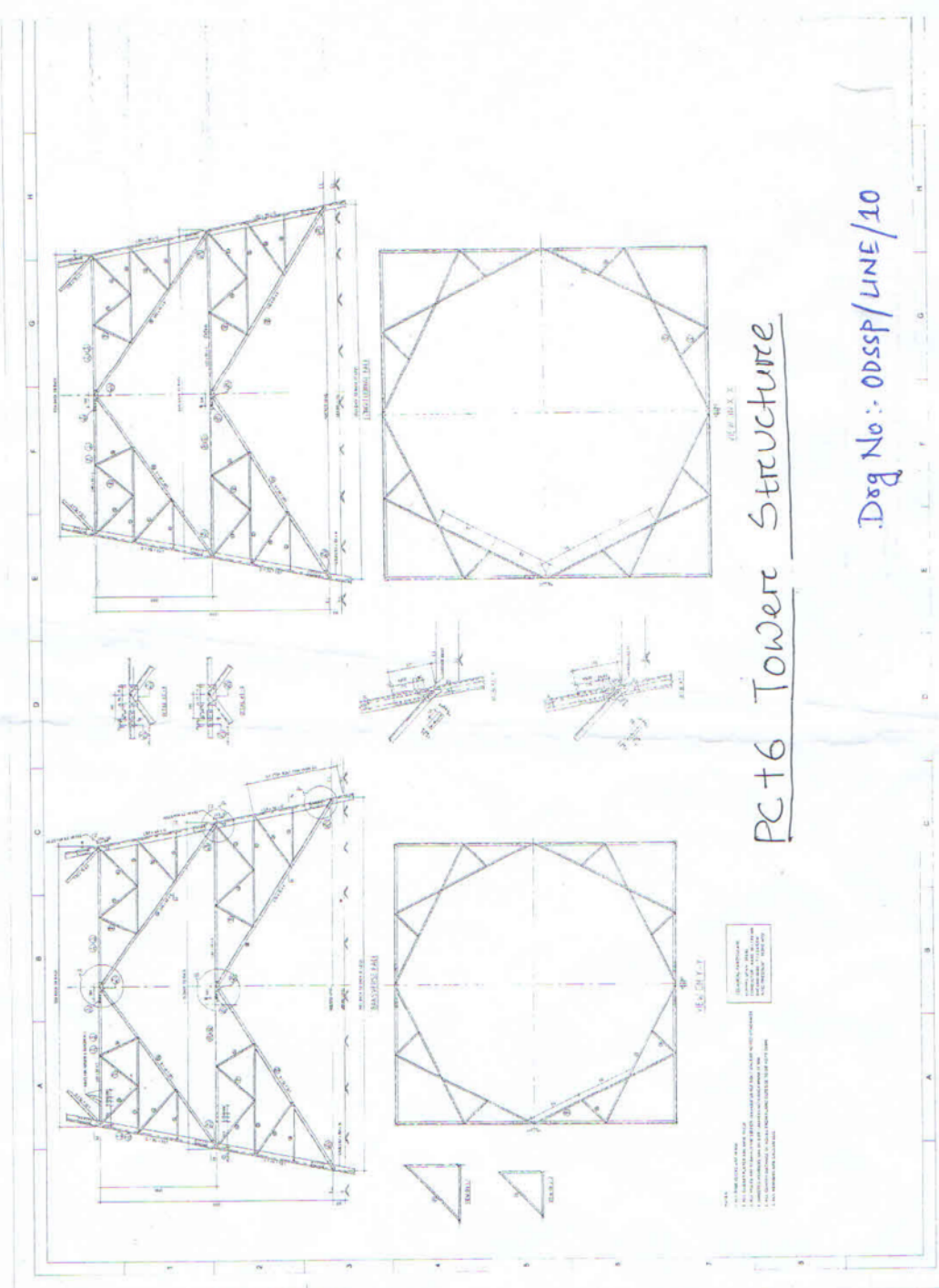
# SUSPENSION ASSEMBLY FOR EARTHWIRE



SL.	DESCRIPTION	MATERIAL	CAT NO.	QTY.
1.	CLAMP & KEEPER	MALLEABLE CAST IRON GALVANISED	B-11	1
2.	U BOLT WITH NUTS ,M12	GALVANISED STEEL		1
3.	J BOLT WITH NUTS ,M12	GALVANISED STEEL		1
4.	FLAT WASHER M12	GALVANISED STEEL		1
5.	SPRING WASHER,M12	SPRING STEEL ELECTRO GALV		4
6.	EYE HOOK	FORGED STEEL GALVANISED		6
7.	BOLTS WITH NUTS,M16	GALVANISED STEEL	S-4	1
8.	FLAT WASHER,M16	GALVANISED STEEL		1
9.	SPLIT PIN	STAINLESS STEEL/BRASS		1

NOTES:-  
 GENERAL TOLERANCE  $\pm 2\%$  UNLESS OTHERWISE SPECIFIED.APPLICABLE  
 STANDARD IS: 2486 PART-I  
 FERROUS PART IS HOT DIP GALVANISED AS PER IS:2629 MINIMUM  
 BREAKING STRENGTH 7000 KG SPRING WASHER ARE ELECTRO  
 GALVANISED FLAT WASHER ARE HOT DIP GALVANISED SUITABLE FOR  
 EARTHWIRE 7/3.15 MM.

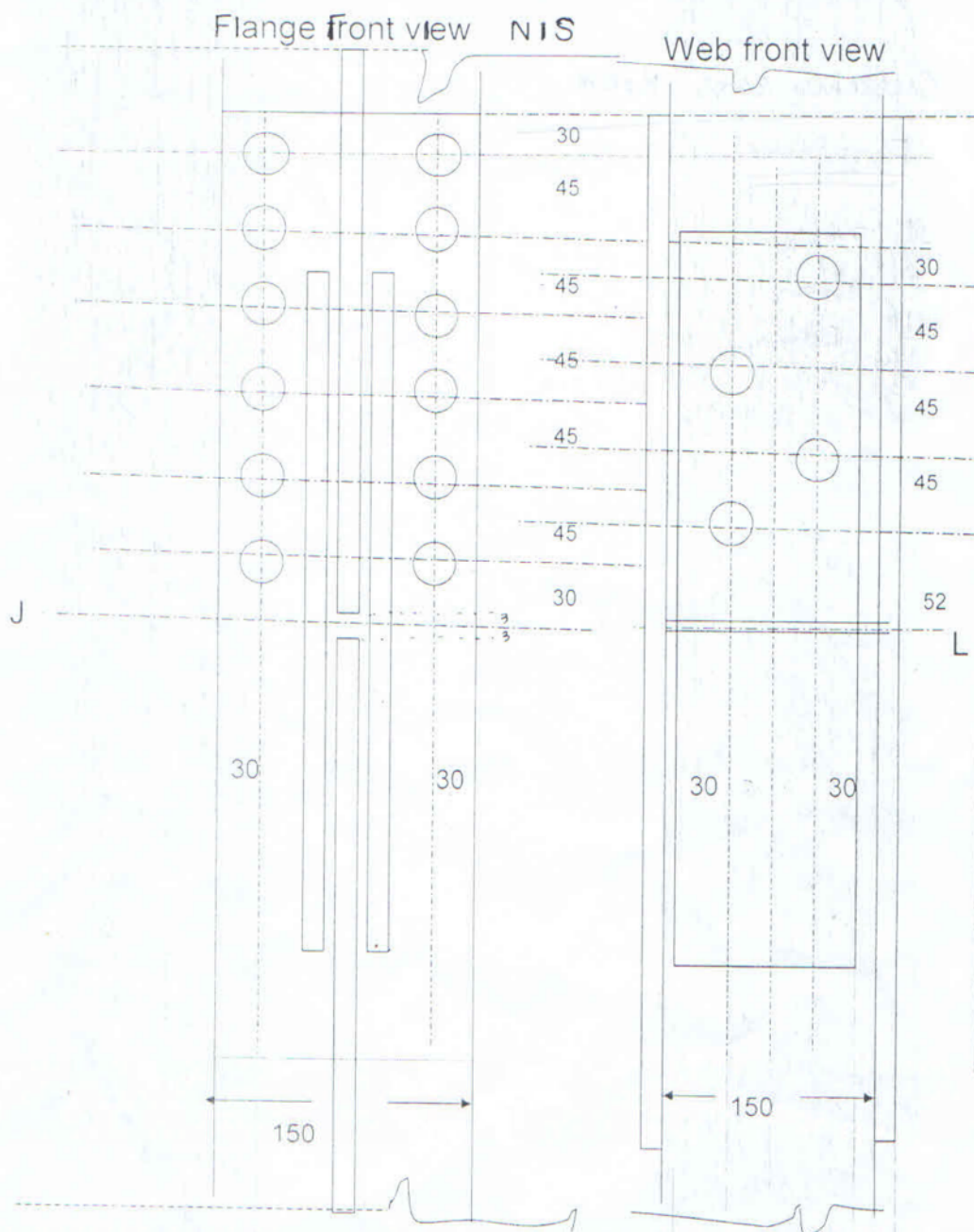
Drg No-ODSSP/LINE/9



PC16 Tower Structure

Desg No :- ODSSP/LINE/10

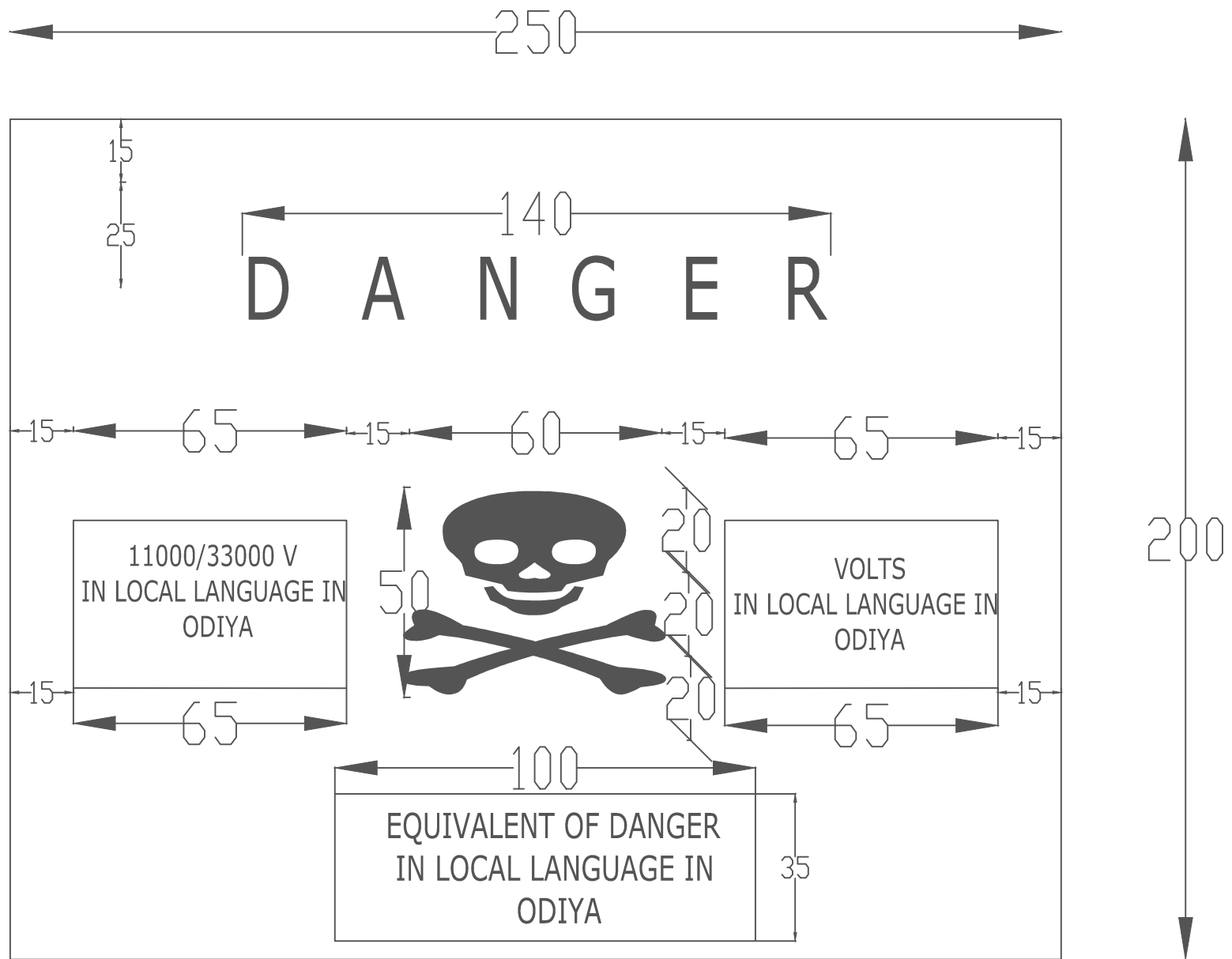
DATE: \_\_\_\_\_  
 DRAWN BY: \_\_\_\_\_  
 CHECKED BY: \_\_\_\_\_  
 APPROVED BY: \_\_\_\_\_



Length of Flange plate-  $2*(3+2*30+5*45)=576\text{mm}*12\text{mm}$   
 Length of Web plate -  $2*(3+52+3*45+30)= 440\text{mm}*12\text{mm}$   
 JL- Joint line

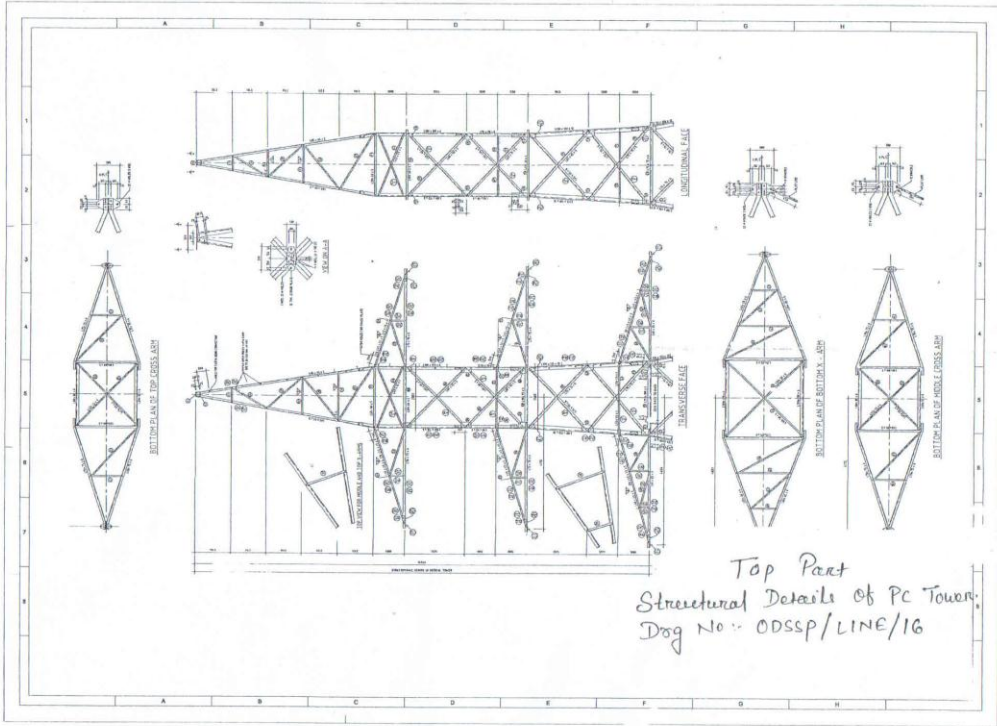
(Joining of GI R.S Joist Pole)

DRG No-ODSSP/LINE/11

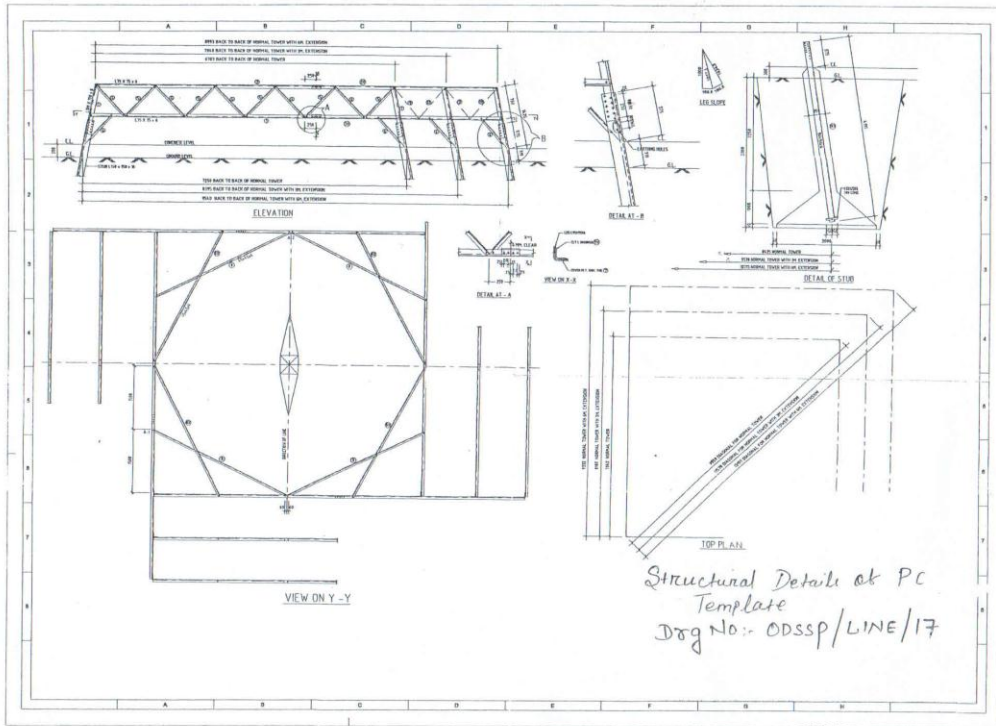


## 33 & 11 kV DANGER BOARD

DRG NO .- ODSSP / LINE / 15



Top Part  
 Structural Details of PC Tower  
 Dog No: ODSSP/LINE/16



Structural Details at PC  
 Template  
 Dwg No:- ODSSP/LINE/17